

# MarshST<sup>®</sup>

An Engineering People Solution



## Product Description

Use MarshST<sup>®</sup> to enhance student training and quality of instruction, increase crew chief ability to incorporate emerging technologies, relieve instructor workload, and provide syllabus relief. MarshST<sup>®</sup> trains and tests personnel on the marshalling signals found in AFMAN 11-218. Once the application is launched, trainees are able to select Instructor, Practice, and Test Modes where they will be transported down to training.

MarshST<sup>®</sup> is designed to streamline aircraft marshalling training by keeping personnel highly interacted with the material.

### **Instructor Mode**

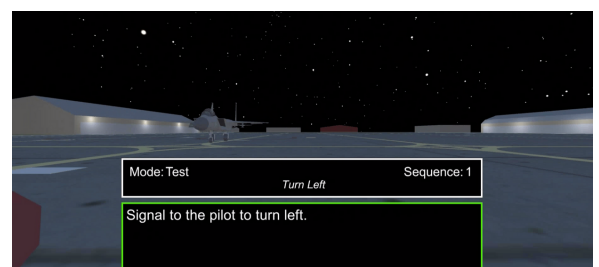
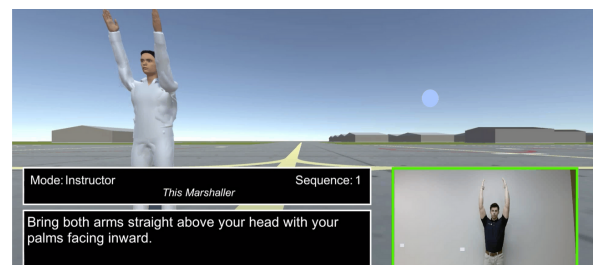
A virtual instructor will demonstrate a marshalling gesture and trainees are prompted to perform the gesture with him.

### **Practice Mode**

Trainees are prompted to guide an aircraft through a sequence of movements before flight and during recovery. If a trainee is having difficulty recalling a gesture, they can spawn the virtual instructor for guidance.

### **Test Mode**

A random base, time of day, and aircraft will be generated and students will be tasked with guiding an aircraft before takeoff and during recovery. Students will have 12 seconds to perform the correct marshalling signal. The trainees score for each gesture will be tracked and a report will be generated so students and instructor can analyze their results.



# MarshST<sup>®</sup>

An EngineeringPeople Solution

## Benefits

- Highly interactive training experience.
- Train multiple people at once.
- Modeled after Sheppard AFB.
- Marshaller point of view.
- Highly customizable application.
- Can be adapted for Virtual Reality.

## Features

- A virtual instructor.
- Trains and tests on the 16 basic marshalling signs.
- Additional 8 gestures included for instruction.
- Test scores provided.
- Three different geographical environments.
- Day and night modes available.
- F-16 and C-17 aircraft models available.
- Audio included.

## Pricing

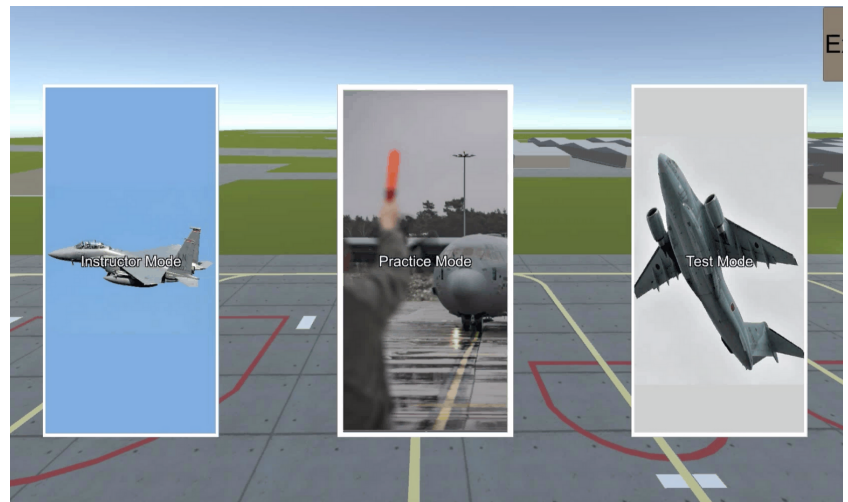
Contact EngineeringPeople for more information.

## Warranty & Maintenance

Contact EngineeringPeople for more information. This can be customized to support your unique needs.

## Customer Reference

If you would like a customer reference to learn more about this product, please contact EngineeringPeople for the instructors contact information.



## About EngineeringPeople

- Advanced CAD/CAM Service Corp. dba EngineeringPeople
- Found in 1991
- Minority Business Enterprise (MBE)
- Small Disadvantaged Business (SDB)
- Duns #: 80-626-0584
- Cage #: 1U4U6

## Contact

Alex Montelongo  
Email: alex@engineeringpeople.com  
Phone: (309) 370-9472